

Papa Joe

CONTEMPORARY, CRISP, MODERN FINISHING TO A BEAUTIFUL LUXURY STEEL HULLED GULET

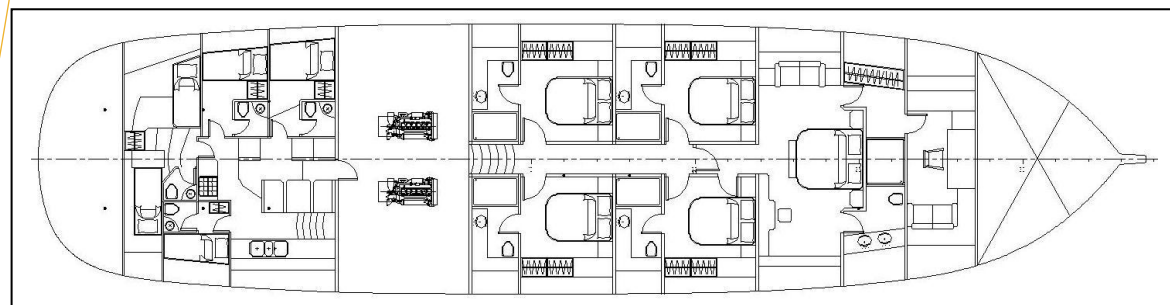


A contemporary look with beautiful classic gulet lines

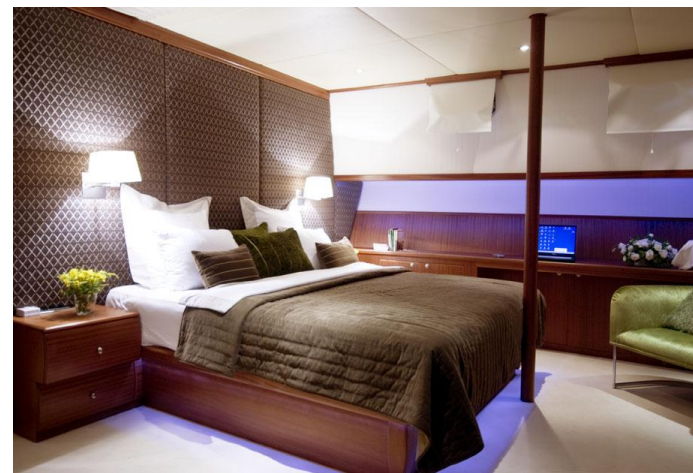
Papa Joe is one of the largest steel hulled gulets ever launched in Turkey, with striking modern elements including voluptuous materials throughout her interior. Leather dining chairs, silk throw pillows, soft lighting, beveled designs and a flat deck set her aside from the more traditional gulets.

World Class Cuisine

Papa Joe takes pride in featuring international cuisine on board, and guests wishing to explore Turkish fusion cuisine will be delighted with Chef Jojo's Asian, French and Italian elements incorporated into classic Turkish dishes.



The master cabin can be joined with the adjacent starboard double cabin to create a family suite with its own private entry.



At a Glance

One master and four double cabins for a total of 10 guests.

Crew: 6

LOA: 33 m

Beam: 8.20 m

Draft 3.25 m

Hull Material: Steel

Classification: Modern Bodrum gulet

Sail Area: 500 sq. m

Rigging ketch...

Fuel Capacity: 2 x 4200 l

Water Capacity: 2 x 2700 + 3600 l

Speed: 13 knots

Engine 2 x 440 HP MAN

RIB: 115 HP

Launch: 2007 Bodrum

Water toys: waterski, jetski, snorkeling equipment, canoe, winsurf upon request.