

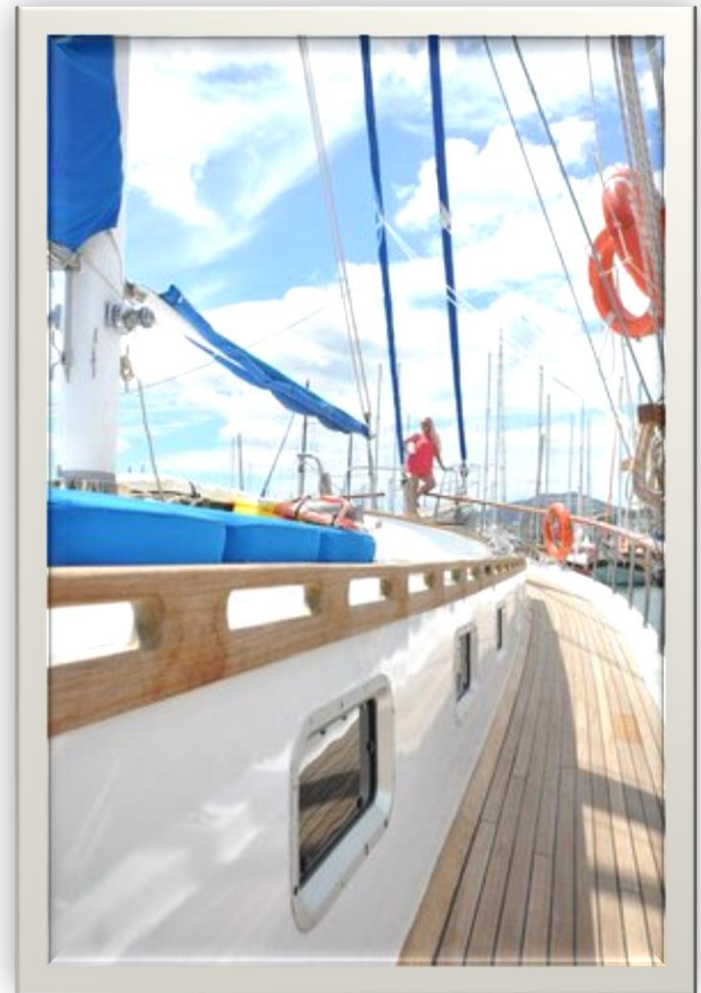
CEMRE IV

STYLE AND COMFORT FOR LARGER GROUPS



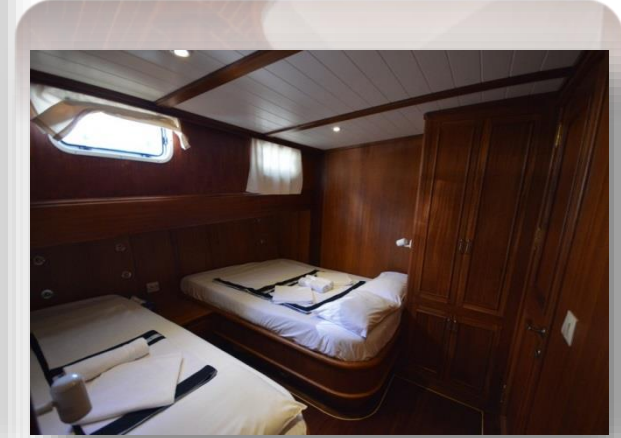
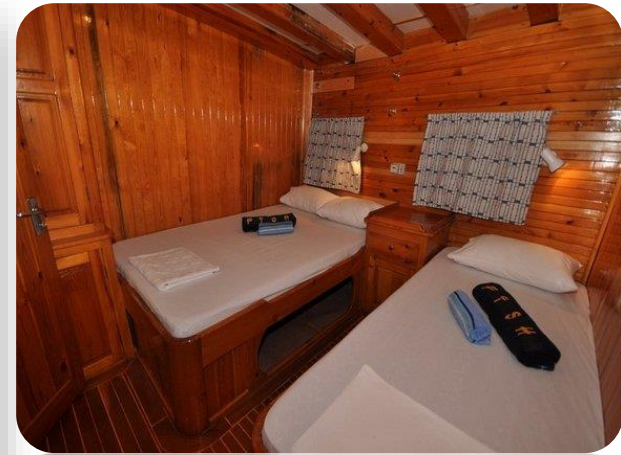
Introducing

WHEN SHE WAS LAUNCHED IN 1998, SHE WAS THE
LARGEST GULET BUILT IN BODRUM MEASURING AT JUST
OVER 30 METERS



CEMRE IV HAS NINE CABINS OF WHICH TWO ARE DOUBLES AND SEVEN ARE TRIPLES, ALL WITH ENSUITE FACILITIES AND AIR CONDITIONING.





CEMRE IV CREW

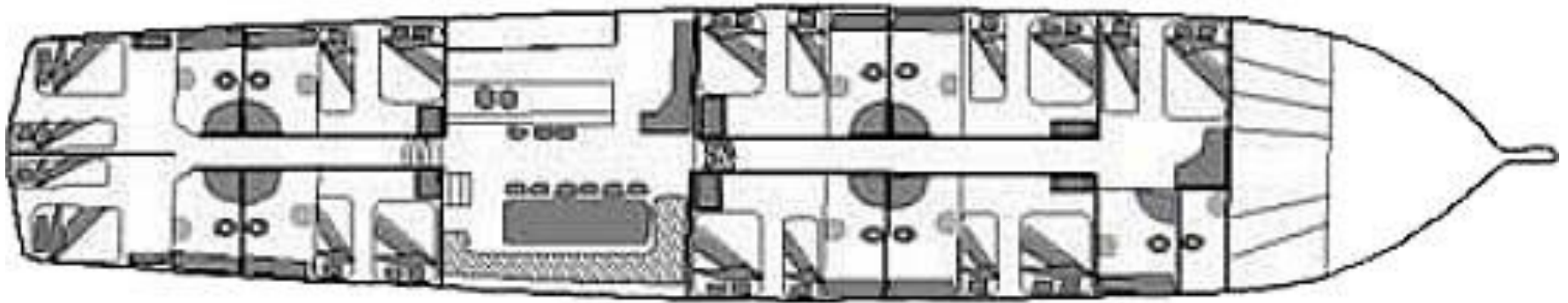
LED BY CAPTAIN HAYATI, THE CREW OF CEMRE IV ARE A CLOSE KNIT, PROFESSIONAL TEAM OF LOCAL SAILORS WITH YEARS OF COMBINED EXPERIENCE.



THERE IS AMPLE DECK SPACE FORWARD AND AFT



CEMRE IV LAYOUT AND PLAN



CEMRE IV TECHNICAL SPECIFICATIONS

Cemre 4 : 7 air-conditioned Dbl + Sngle bed. cabins with ensuite Bath & WC. 2 air conditioned double cabins for up to 18 guests.

Technical Data : Turkish flagged Ketch Gulet, Length over Deck 30.50 m, Beam 7.60 m, Draft 3.40 m, Engine 2 x 440 HP MAN Marine, Freshwater 10.000 lt, Fuel 8.000 lt.

Comfort/Recreation : Spacious sun deck area with Sun mattresses and cushions, Sun awning, Cushioned aft deck with a large table, Deck chairs, spacious saloon with bar and dining table, Music Set, Color TV, VCD Player, Fiber Dinghy with outboard, Inflatable Speedboat with 40 HP, Snorkel and Fishing Equipment, 3 Canoe, 2 Windsurfers, Banana & Ringo.

Equipment : Complete navigation equipment, Mobile Phone, Generator 16 kW Onan, 12 + 24 + 220 V, Life Raft, Life Jackets, Fire Extinguishers, Fully equipped Galley, Dishwasher, Washing machine, Filter Coffee, Refrigerator, Deep Freezer, Ice Boxes, Ice Maker.

Cabins : 9 double and single berth spacious and comfortable cabins. All cabins with air conditioning system and ensuite shower and toilet. All cabins with portholes, wardrobe, drawer, mirror.



Cemre IV